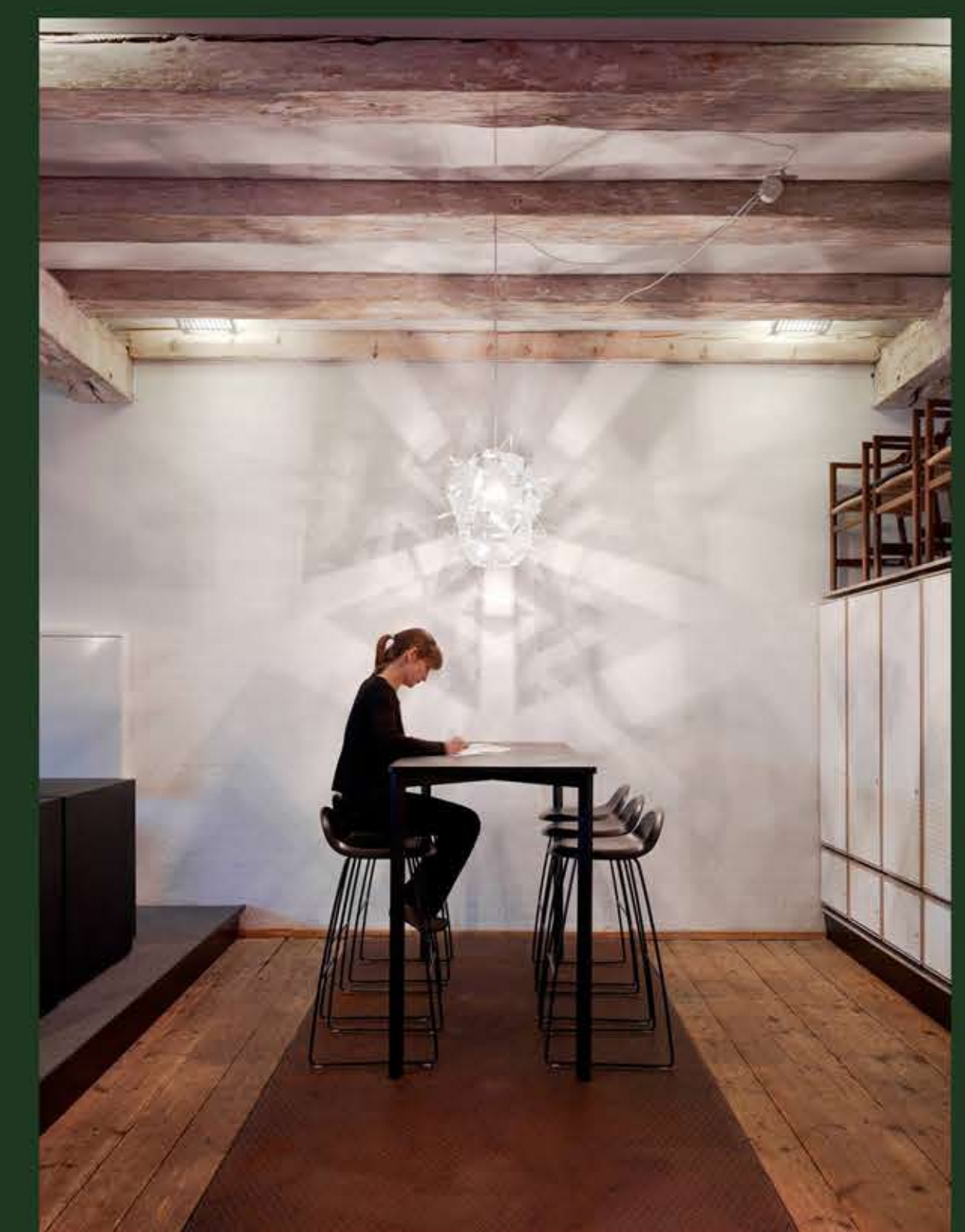
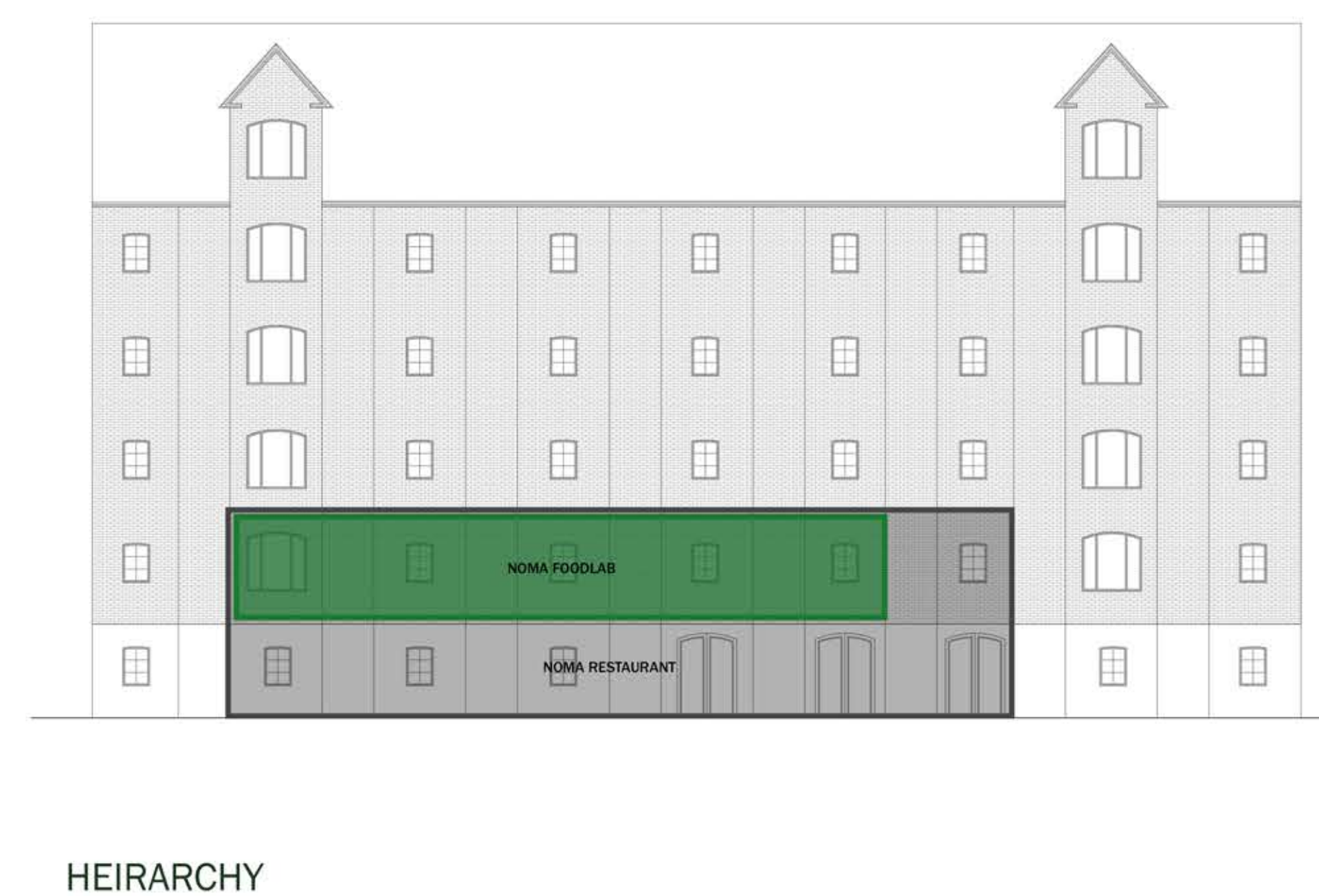
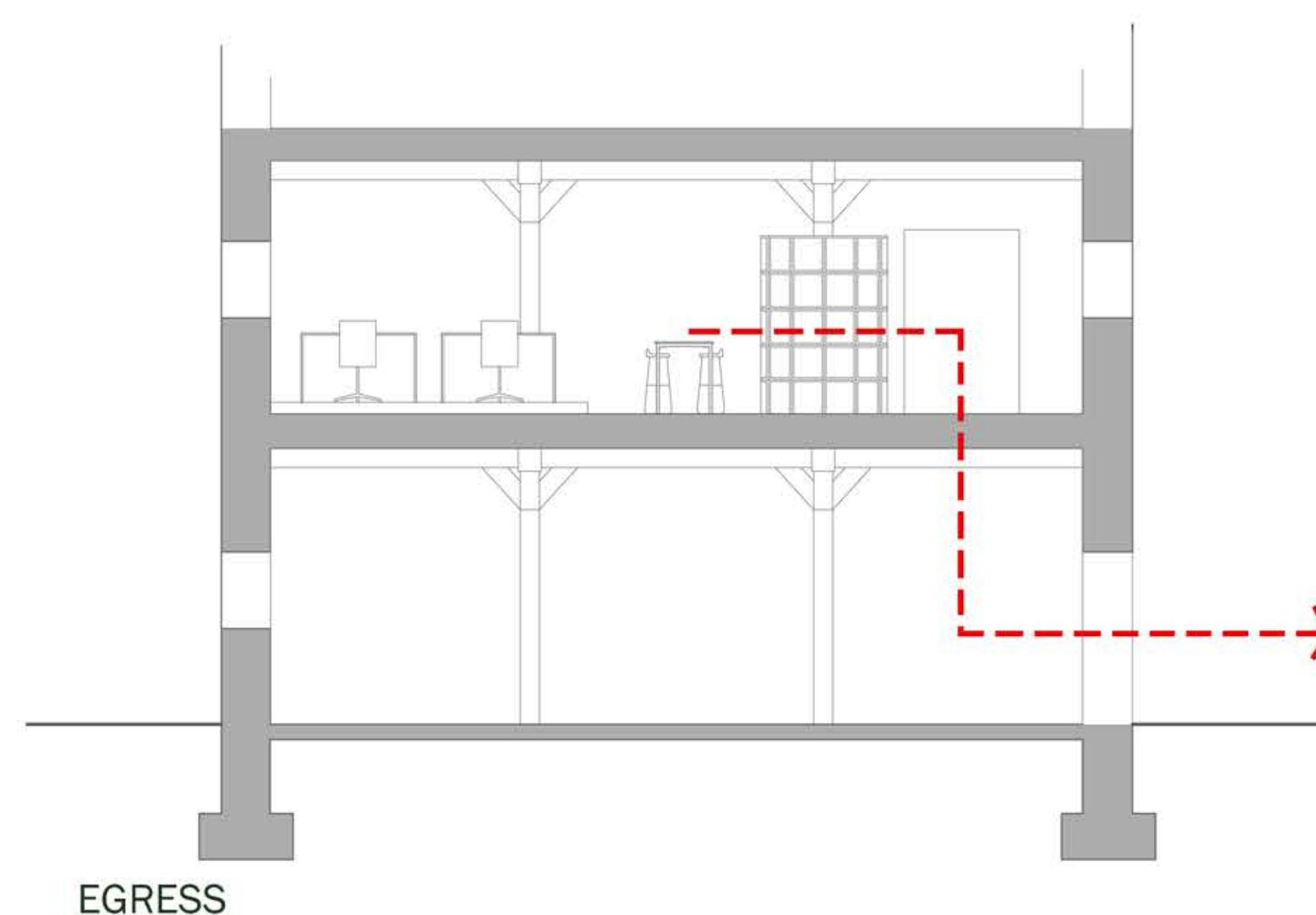
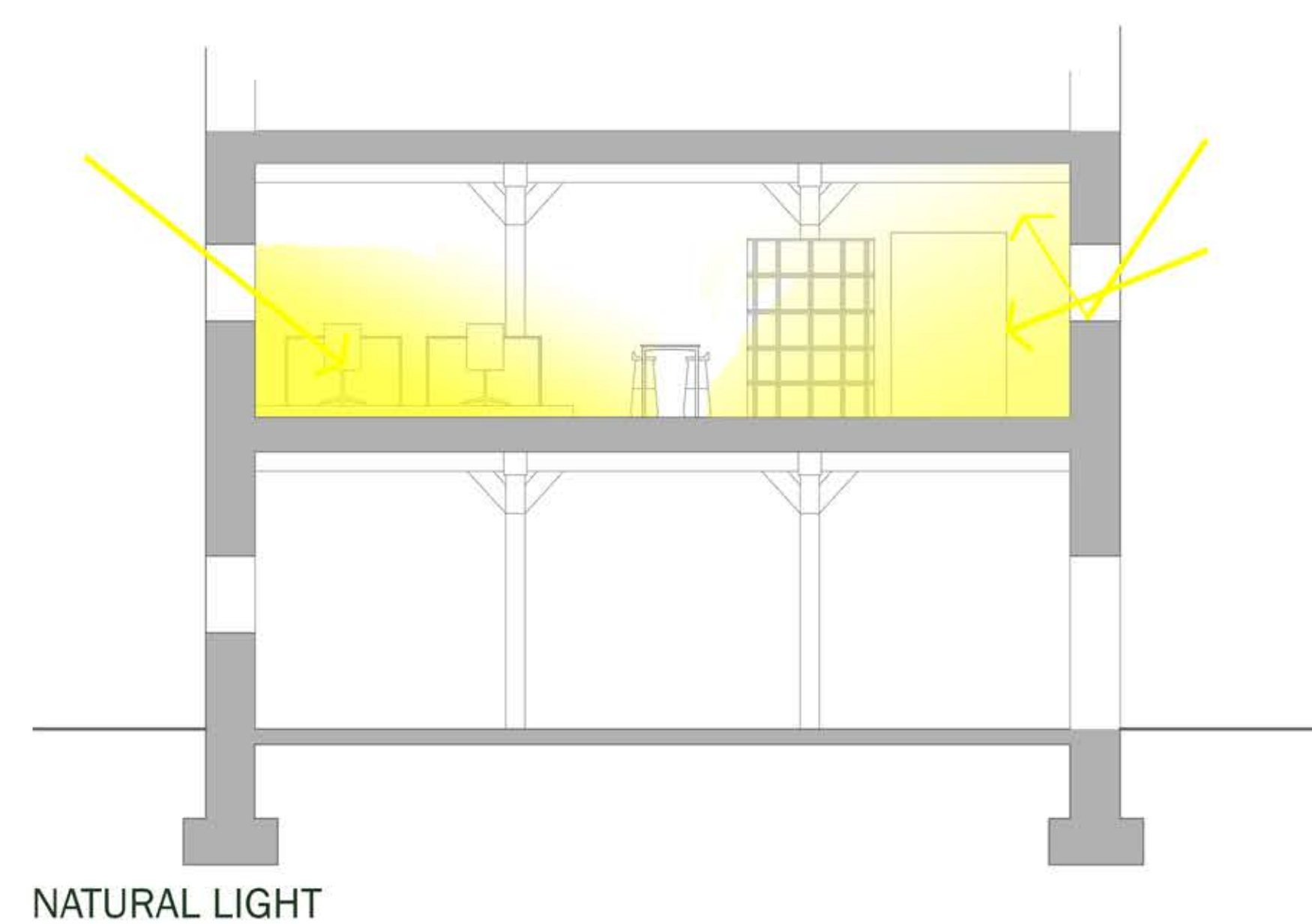
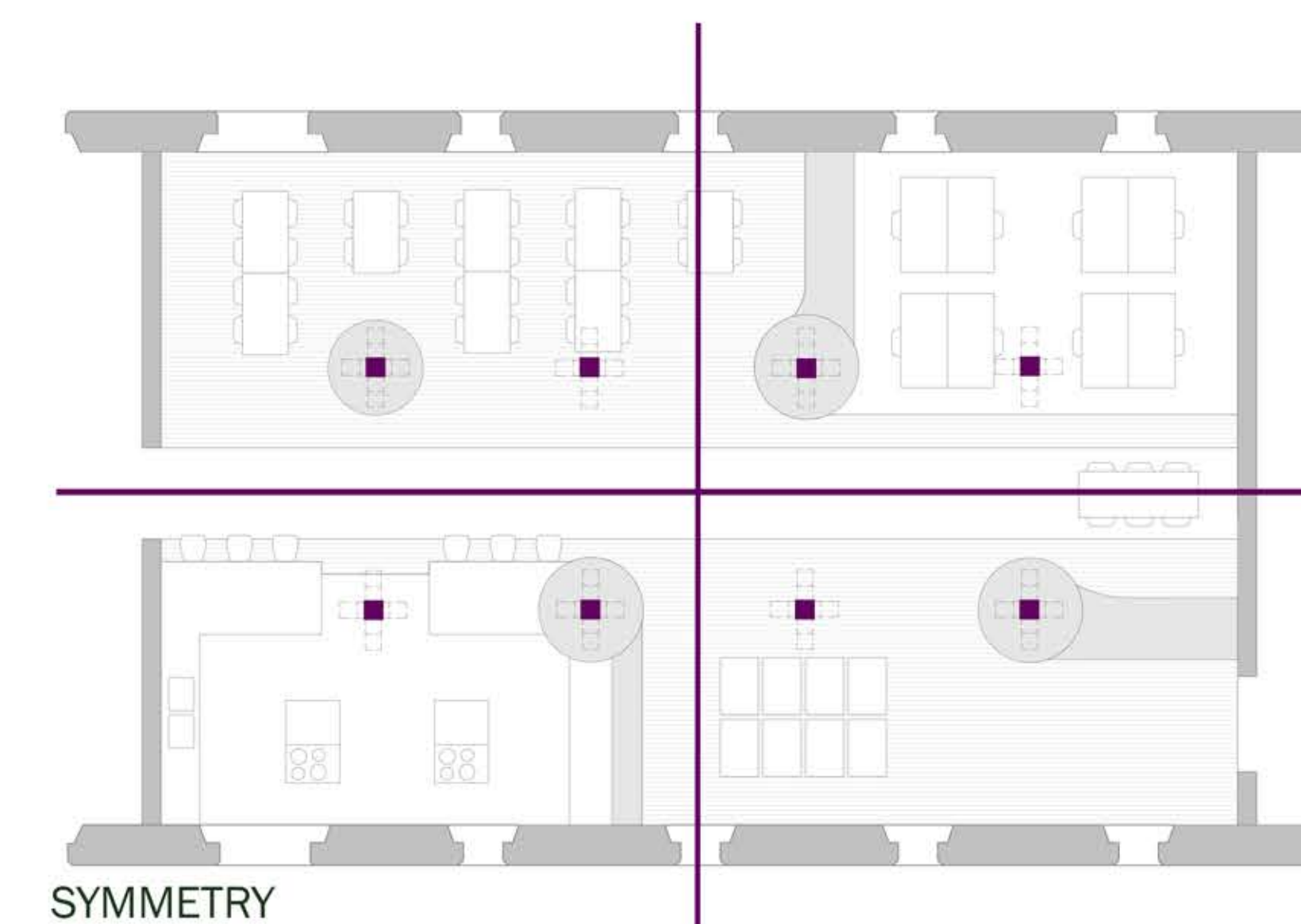
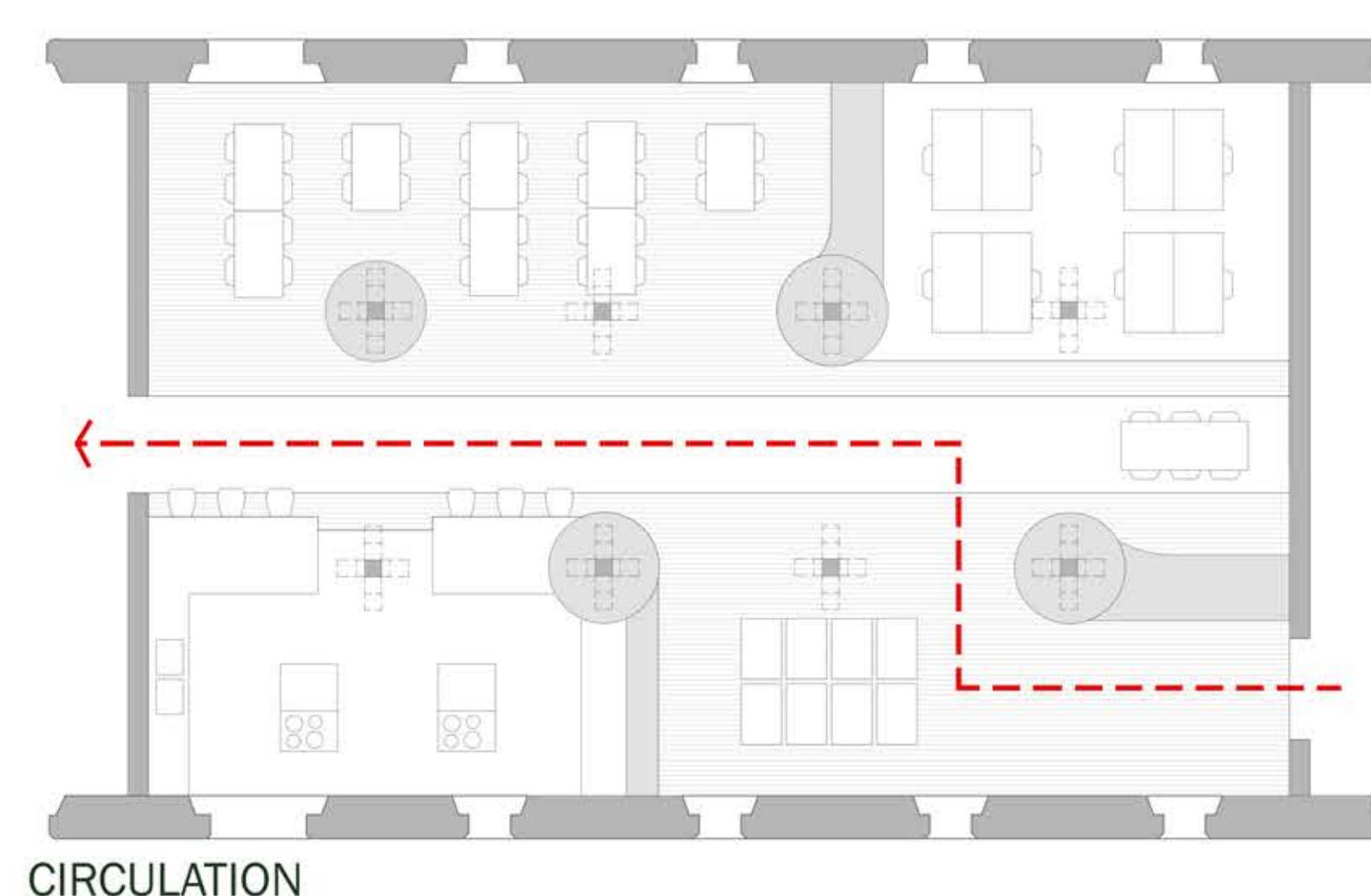
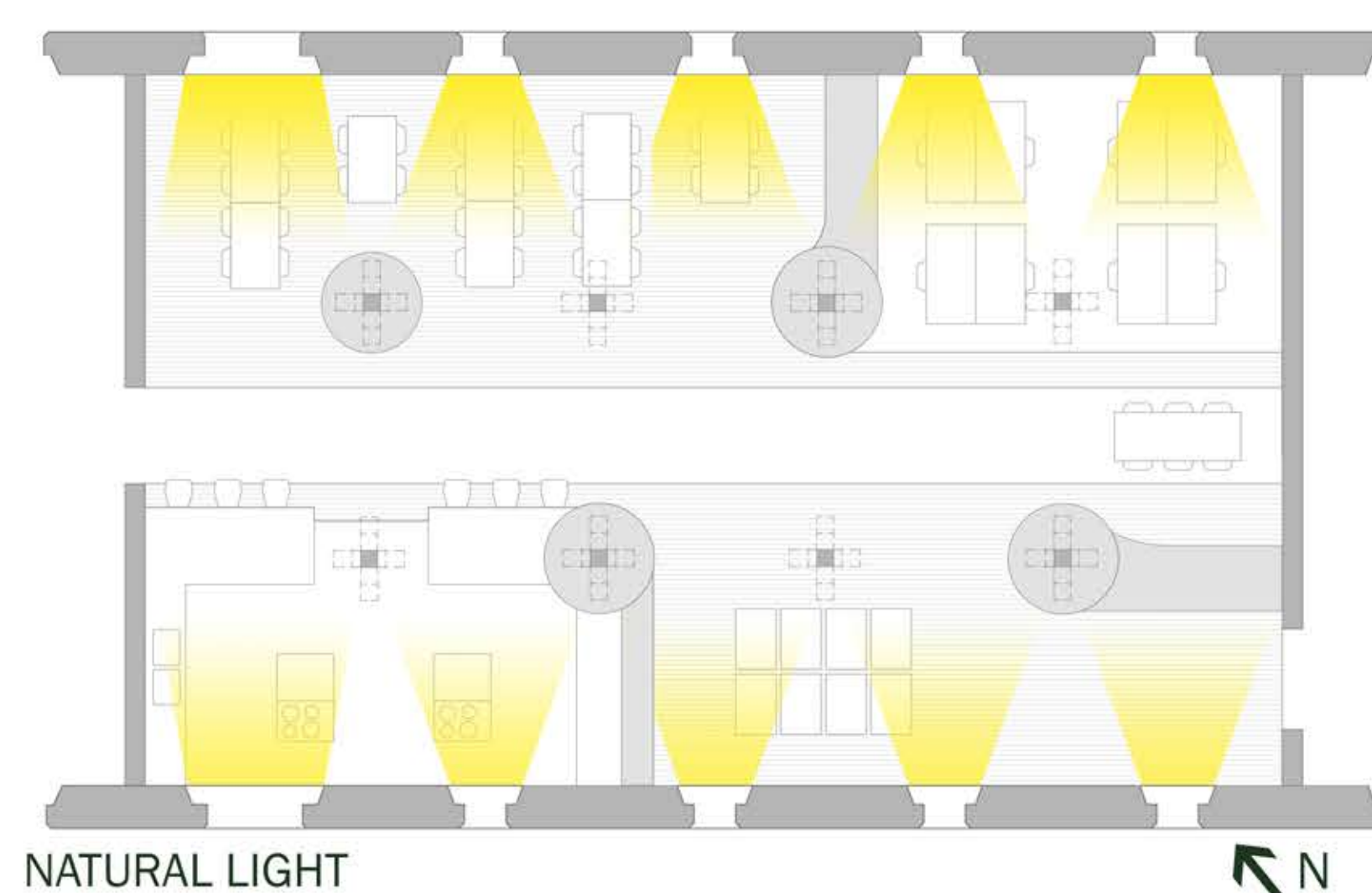
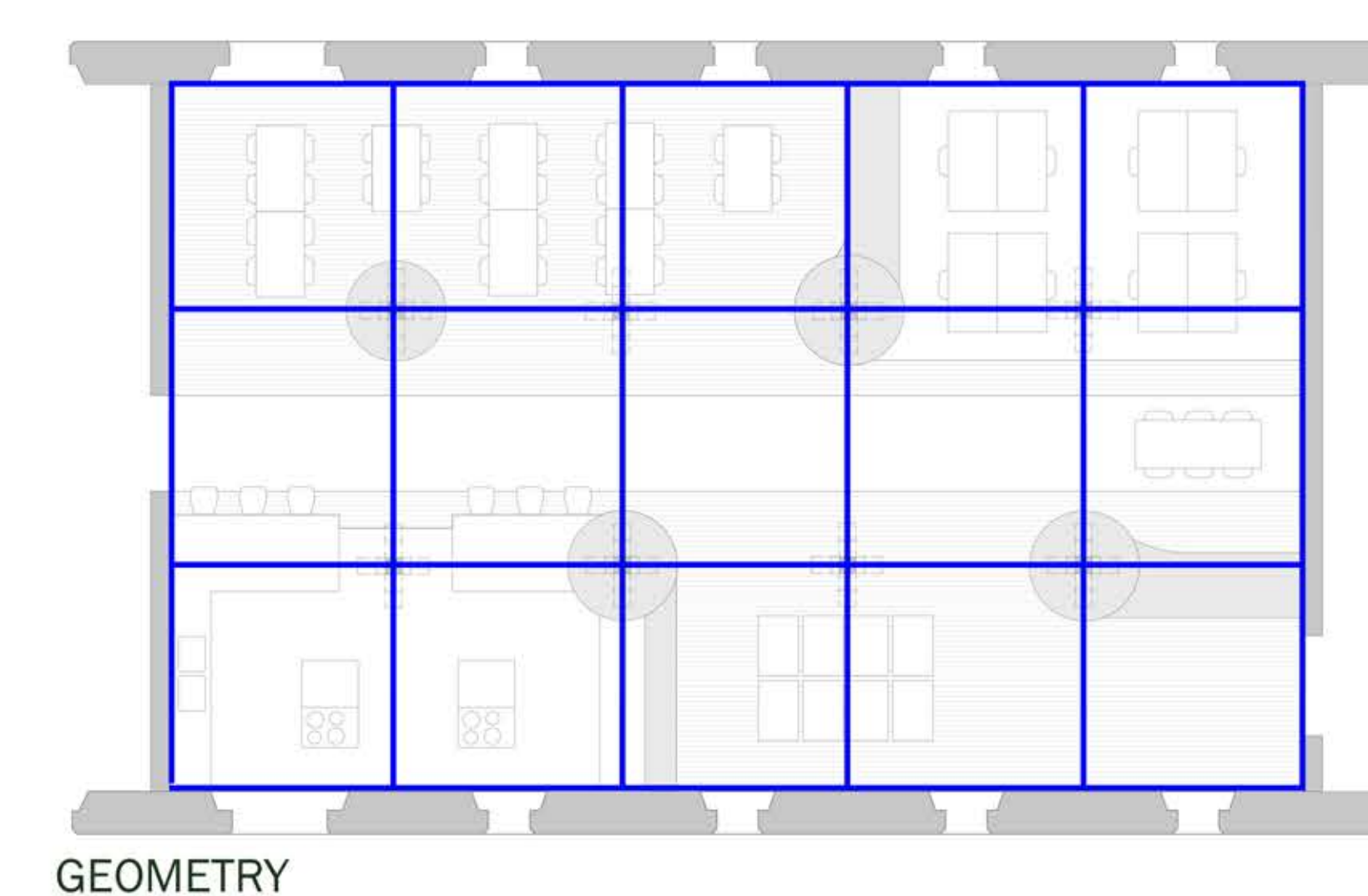
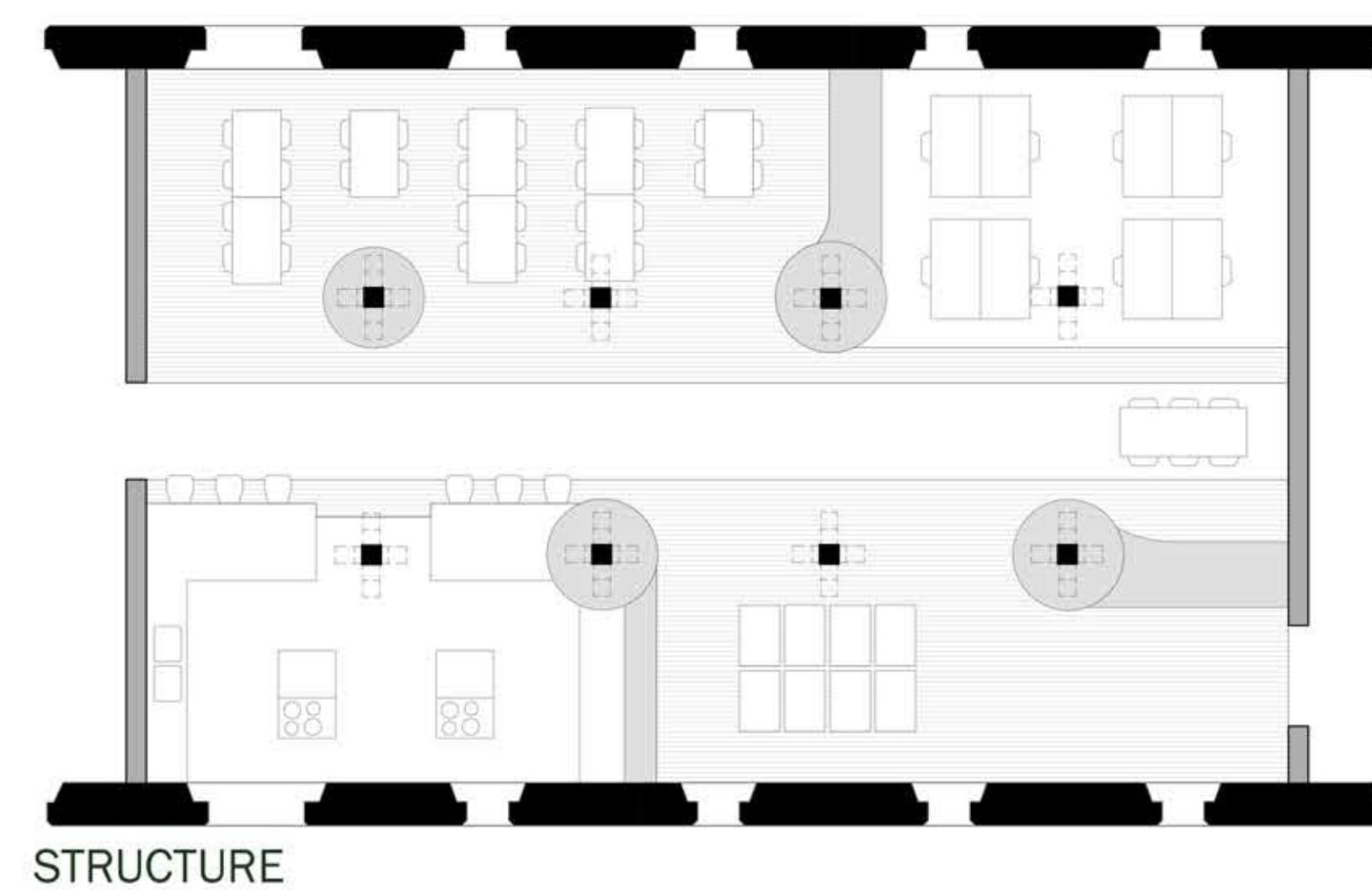
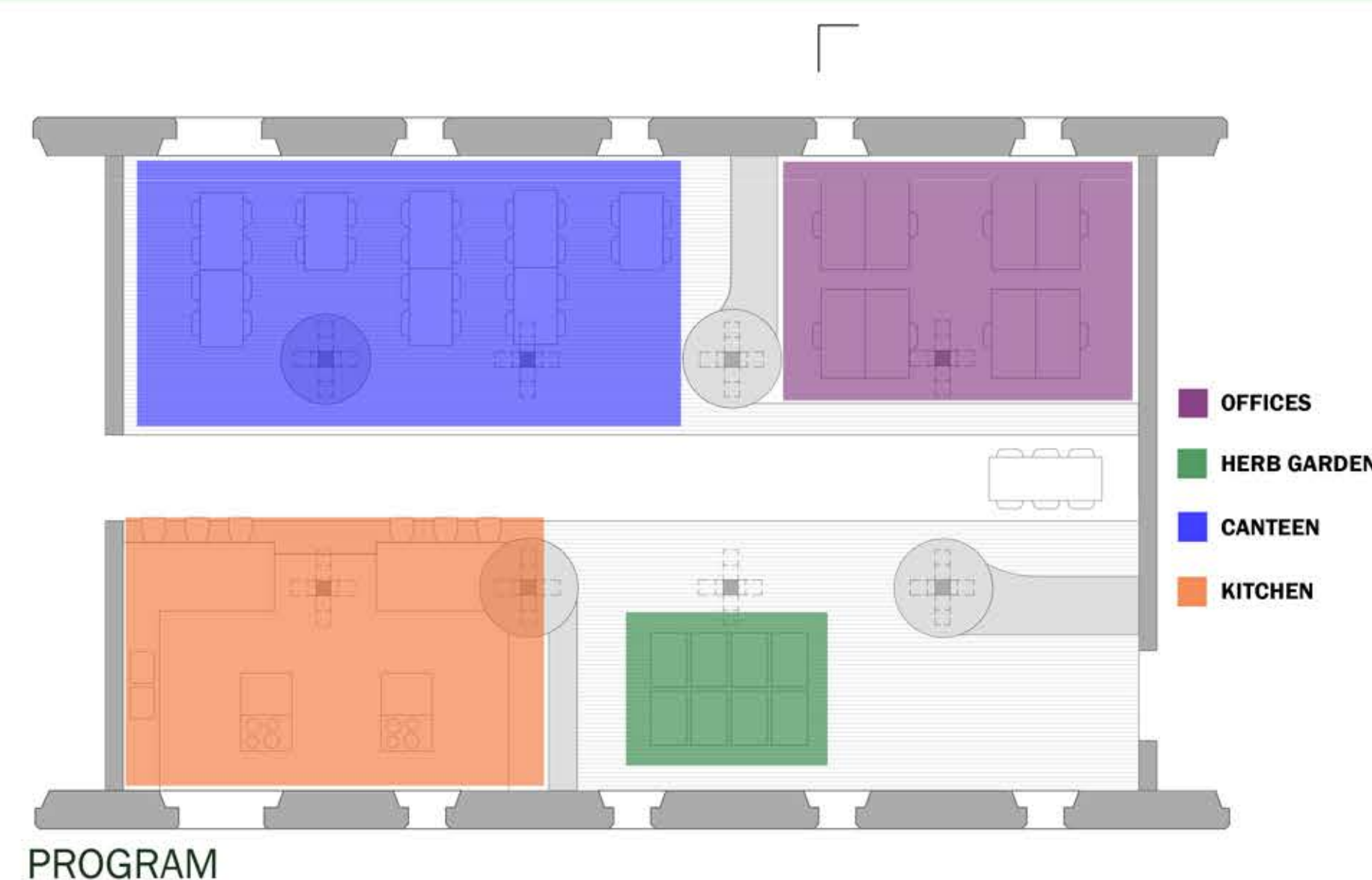


# NOMA FoodLab

2012  
3XN Architects  
Copenhagen, Denmark

I selected this precedent because of its functionality. It is an food lab, that allows for experimentation and collaborative processes. The main feature of the food lab is the storage cube matrix that weaves throughout the whole space. The storage cubes are also used to partition off spaces. Within these spaces, there are individual stations created for the employees. For my design, I would prefer the partitions to be more flexible, than at NOMA. I do like the idea of integrating storage and partitions; it is functional and practical. I also want to implement the idea of having stations for experimentation, so they are easily accessible to multiple people.



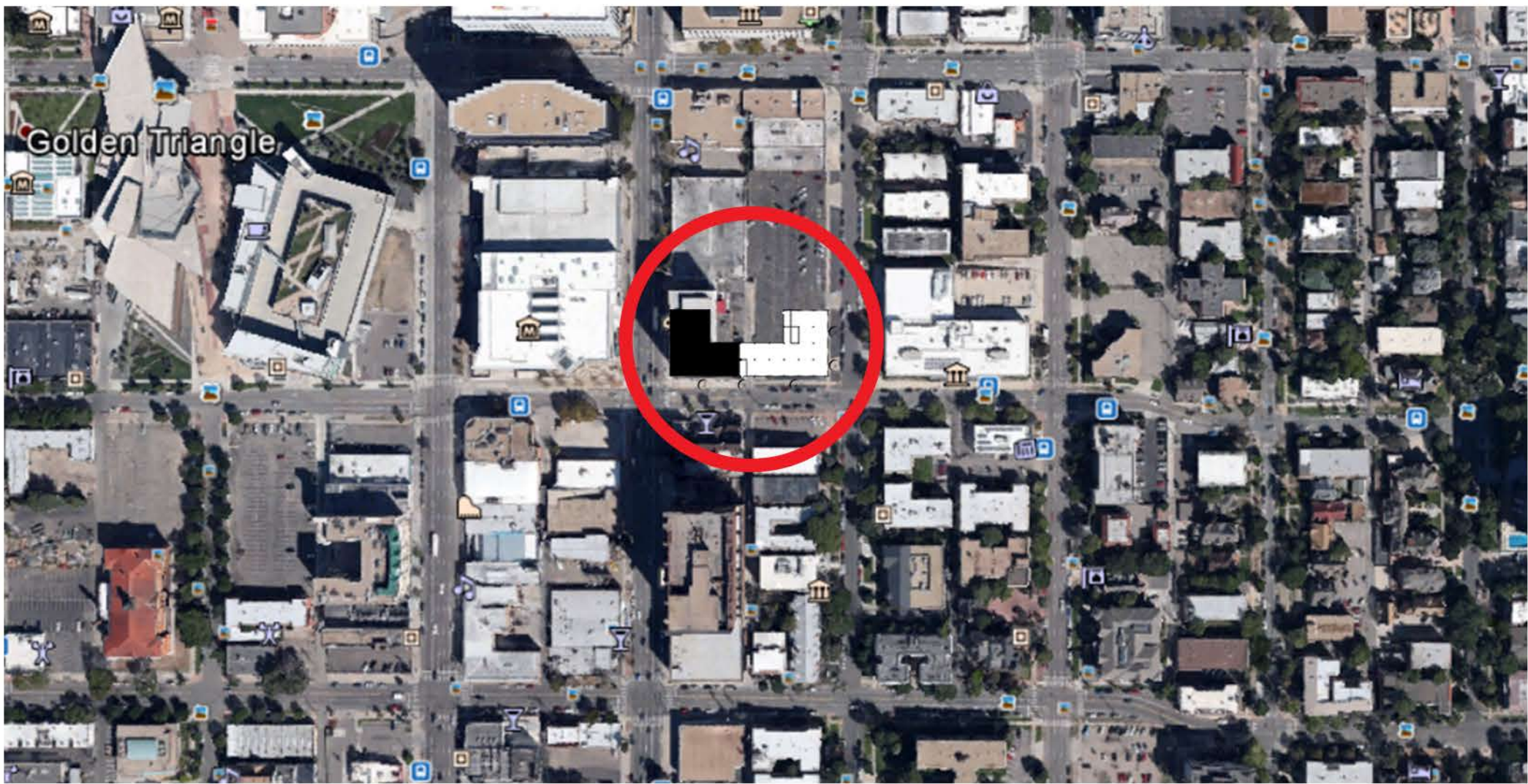
MATERIAL: NORDIC WOOD



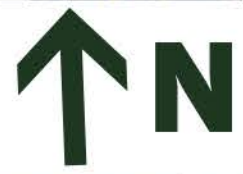
# D. I. Y. HOTEL

## Denver is Yours Boutique Hotel

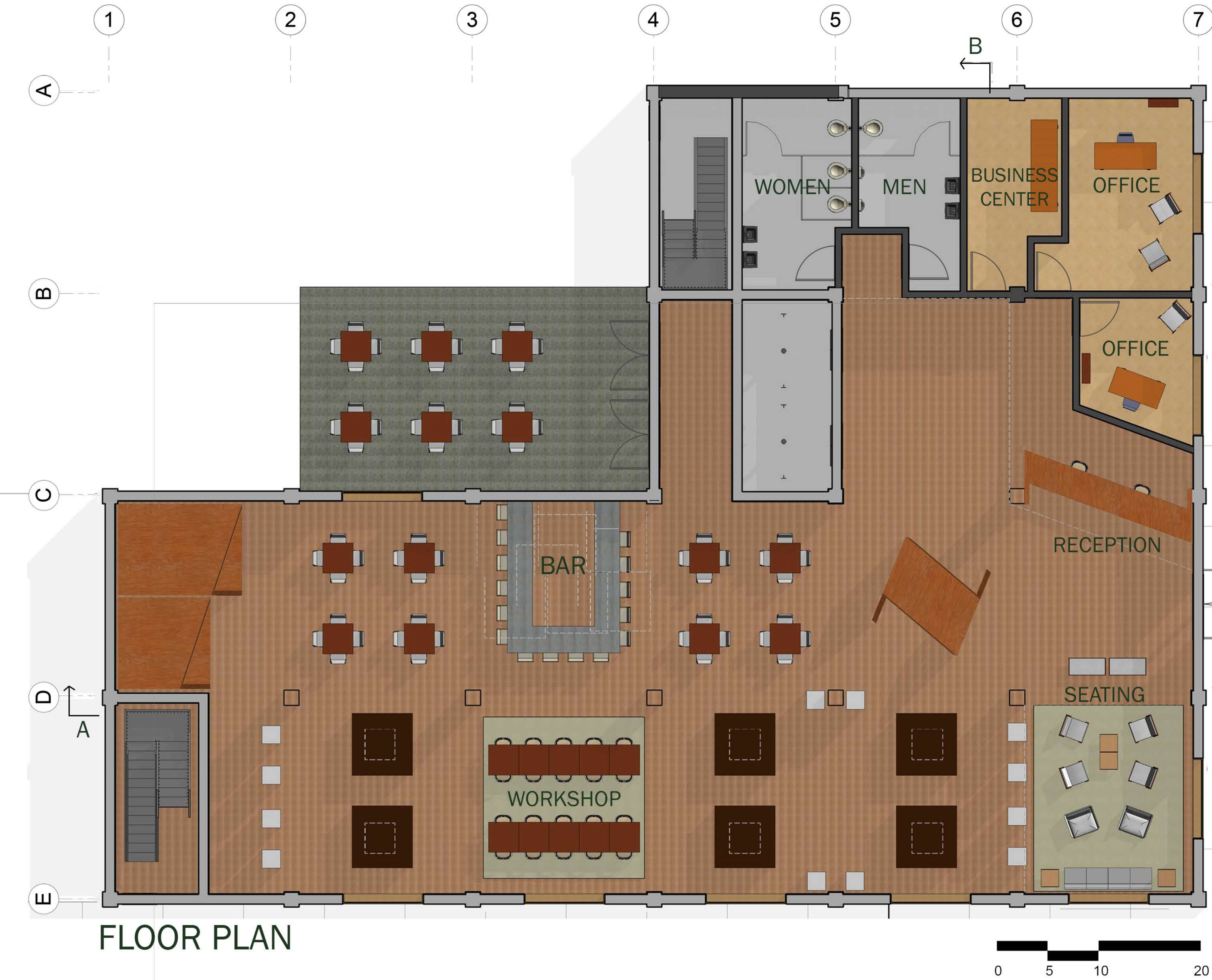
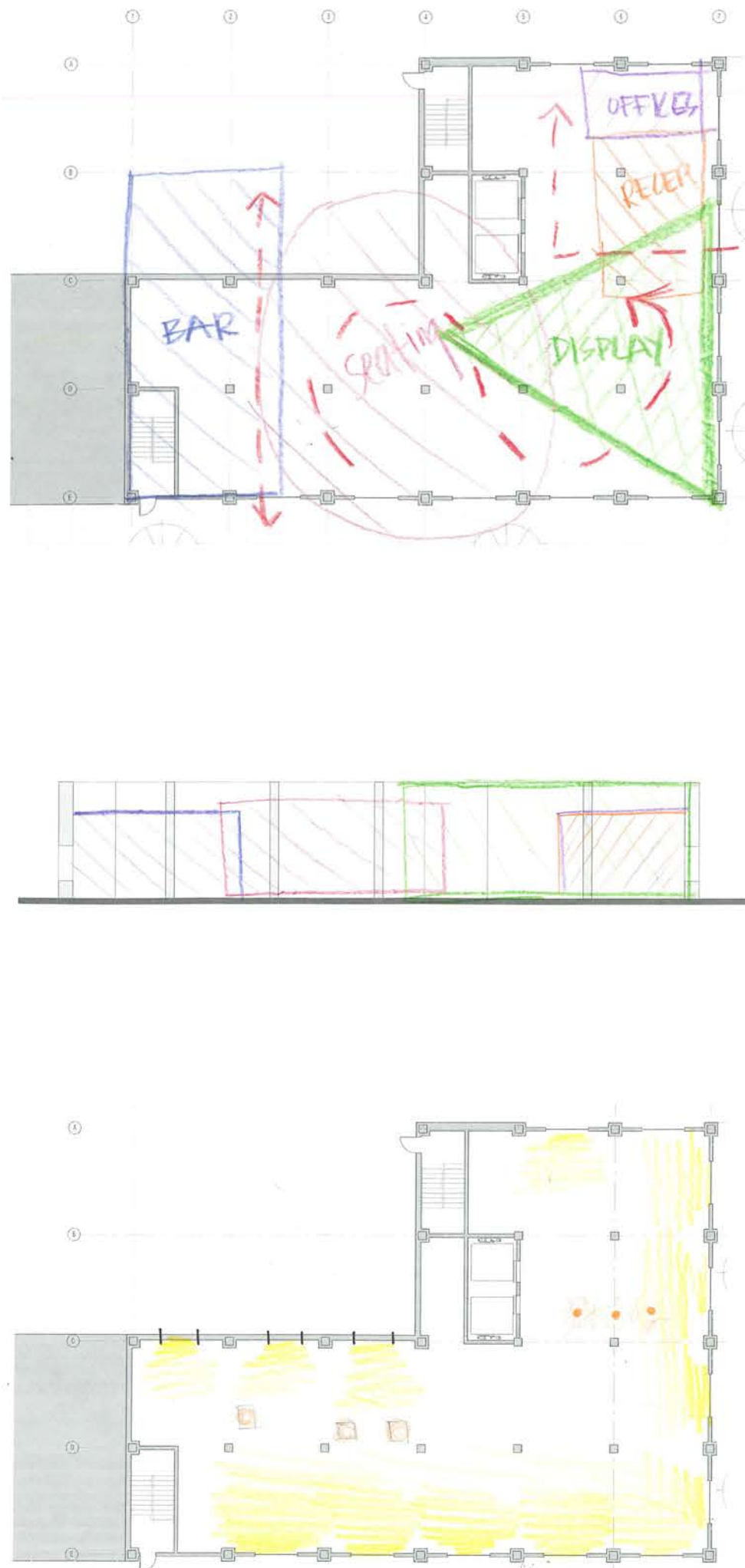
The precedent researched at the beginning of this project, NOMA Food Lab, is supportive of food experimentation. This new hotel lobby will also be supportive of experimentation, except with crafts. Crafters of all ages will want to visit this new hotel lobby. This hotel will accommodate bloggers from around the United States. The bloggers will be able to set up a station with items they feature on their blog. The attracted bloggers will be able to come to this hotel and teach other guests how to make the projects, crafts and products they feature on their blogs. Guests can either view the products while they are on display, and at certain times can attend a tutorial from the blogger. The design of NOMA Food Lab was an open floor plan that allowed for views throughout the whole space. The open floor plan of this lobby will be a space that allows for heavy and varied traffic flow throughout. NOMA Food Lab was also highly considerate of the structural columns and didn't ignore them. To consider the structure in this new hotel lobby, I want to continue the look of the columns with storage. Throughout the space, there will be portable column shaped storage units that allow bloggers to either display works or house supplies. Seating areas will be integrated into the flexible lobby area, but will only be semi-flexible.



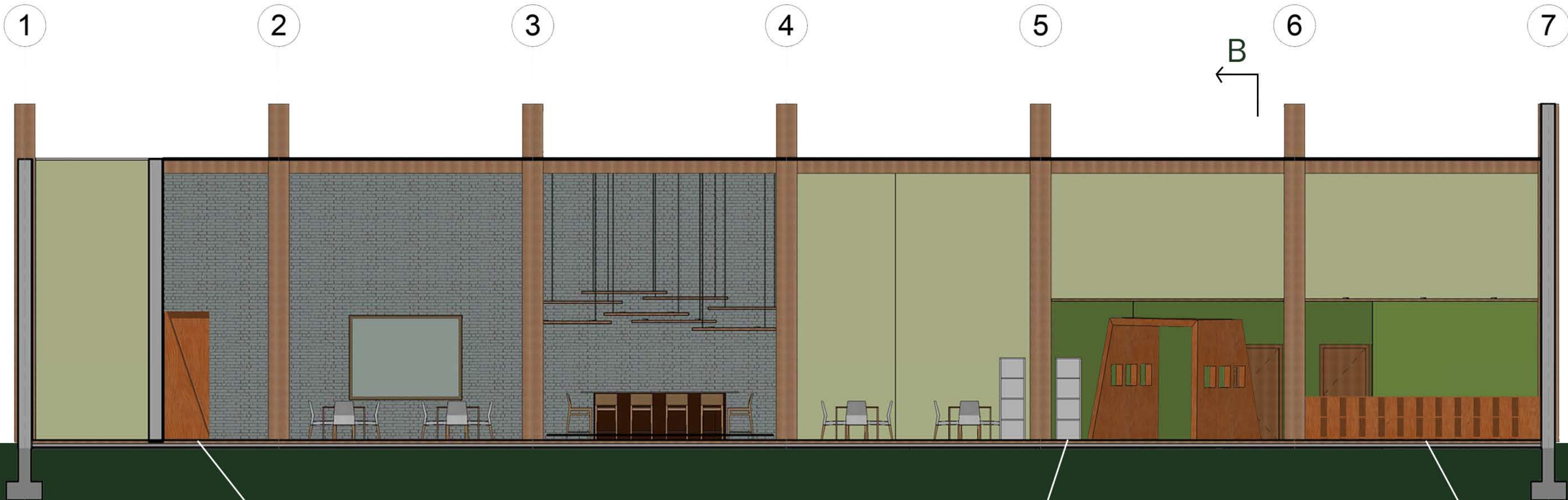
### SITE PLAN



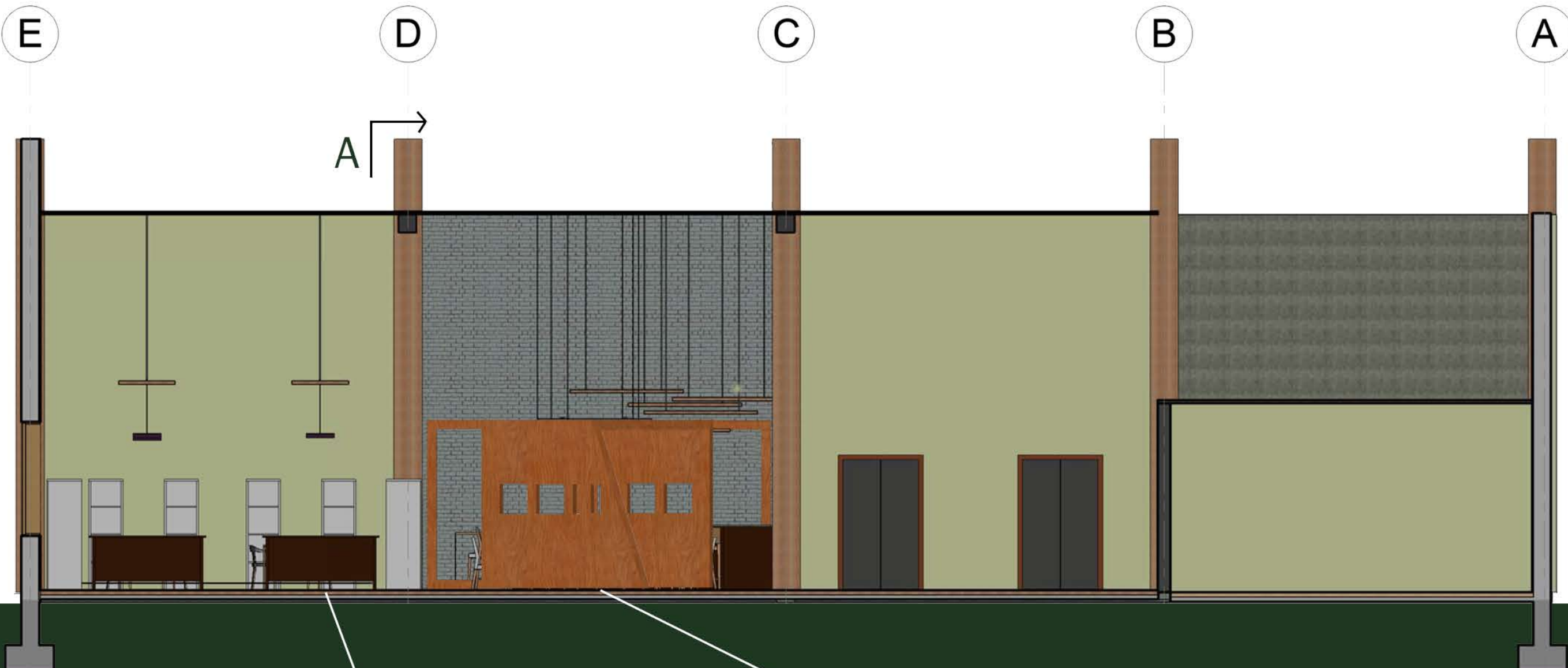
### CONCEPT SKETCHES



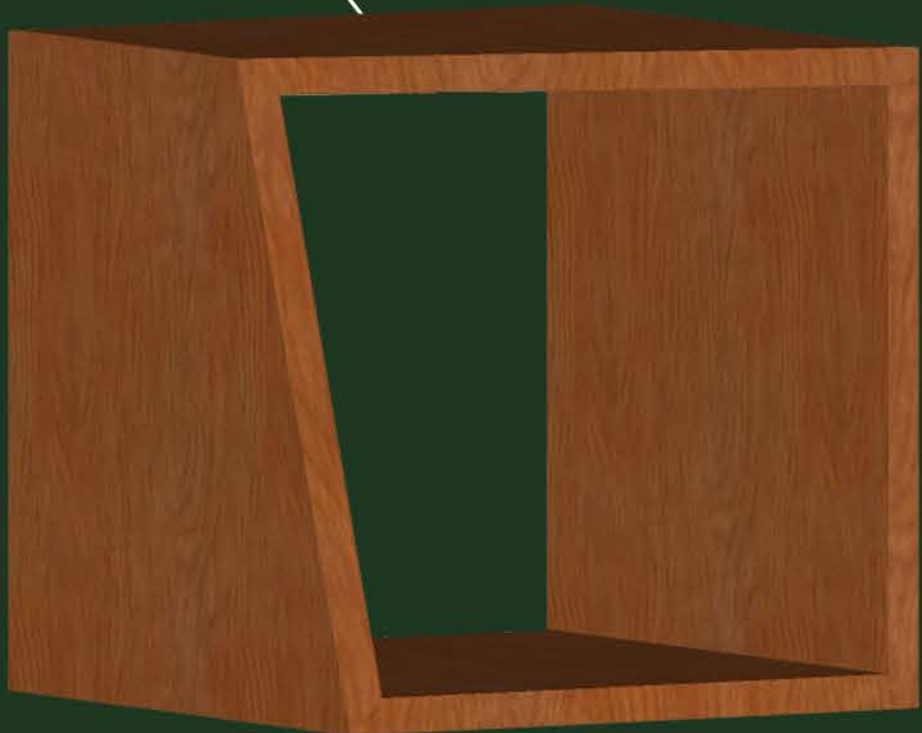
### FLOOR PLAN



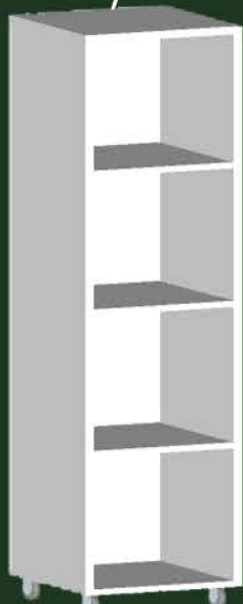
### SECTION A



### SECTION B



Seating area with a more intimate feel



Storage columns for craft supplies



Reception desk displaying previous crafts

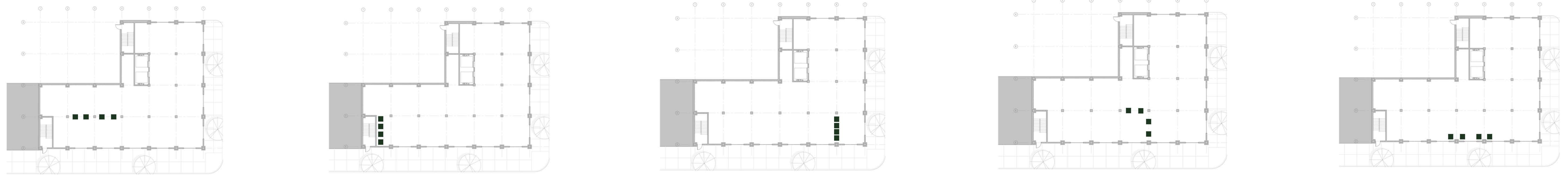


Workshop tables for craft tutorials

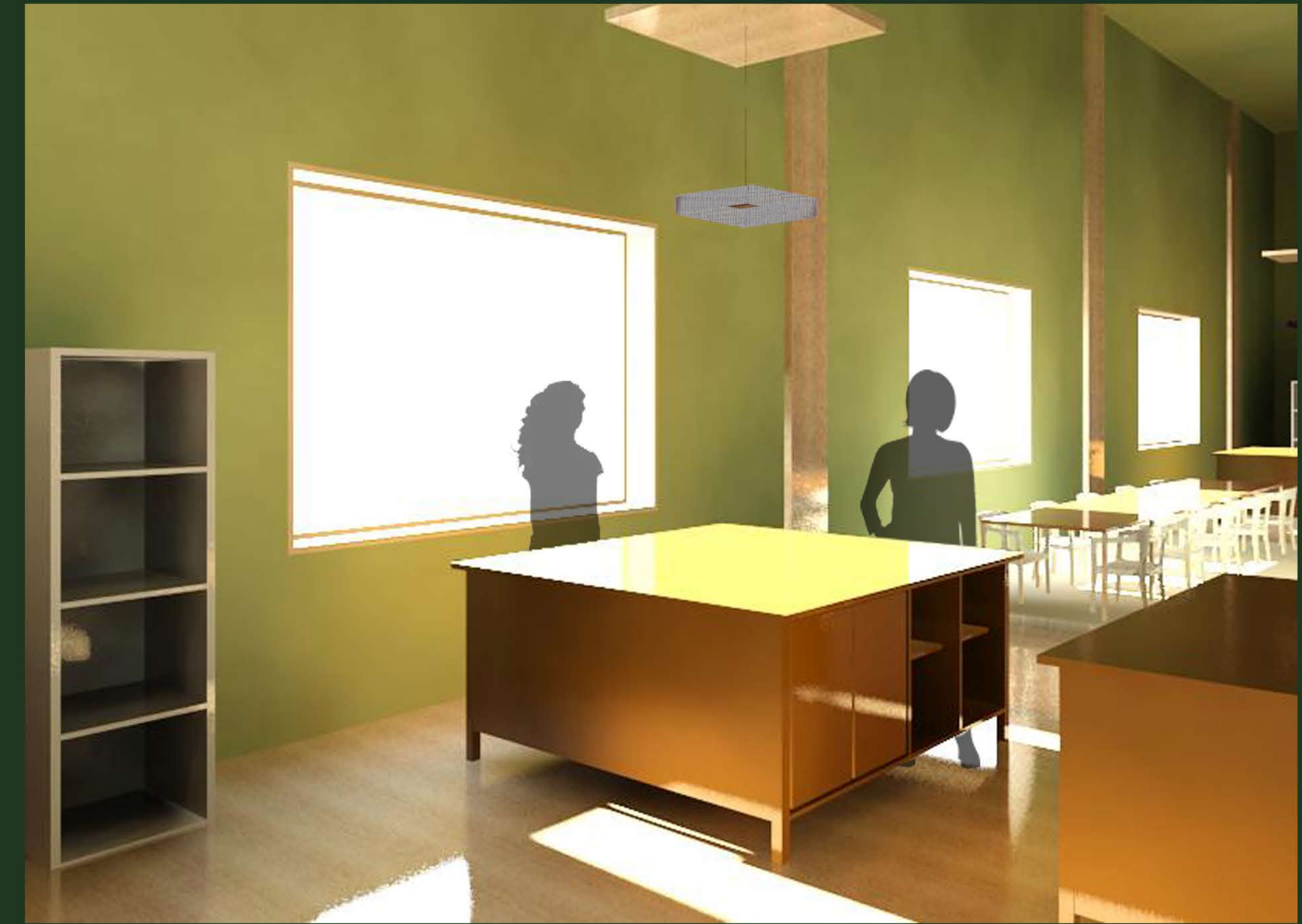
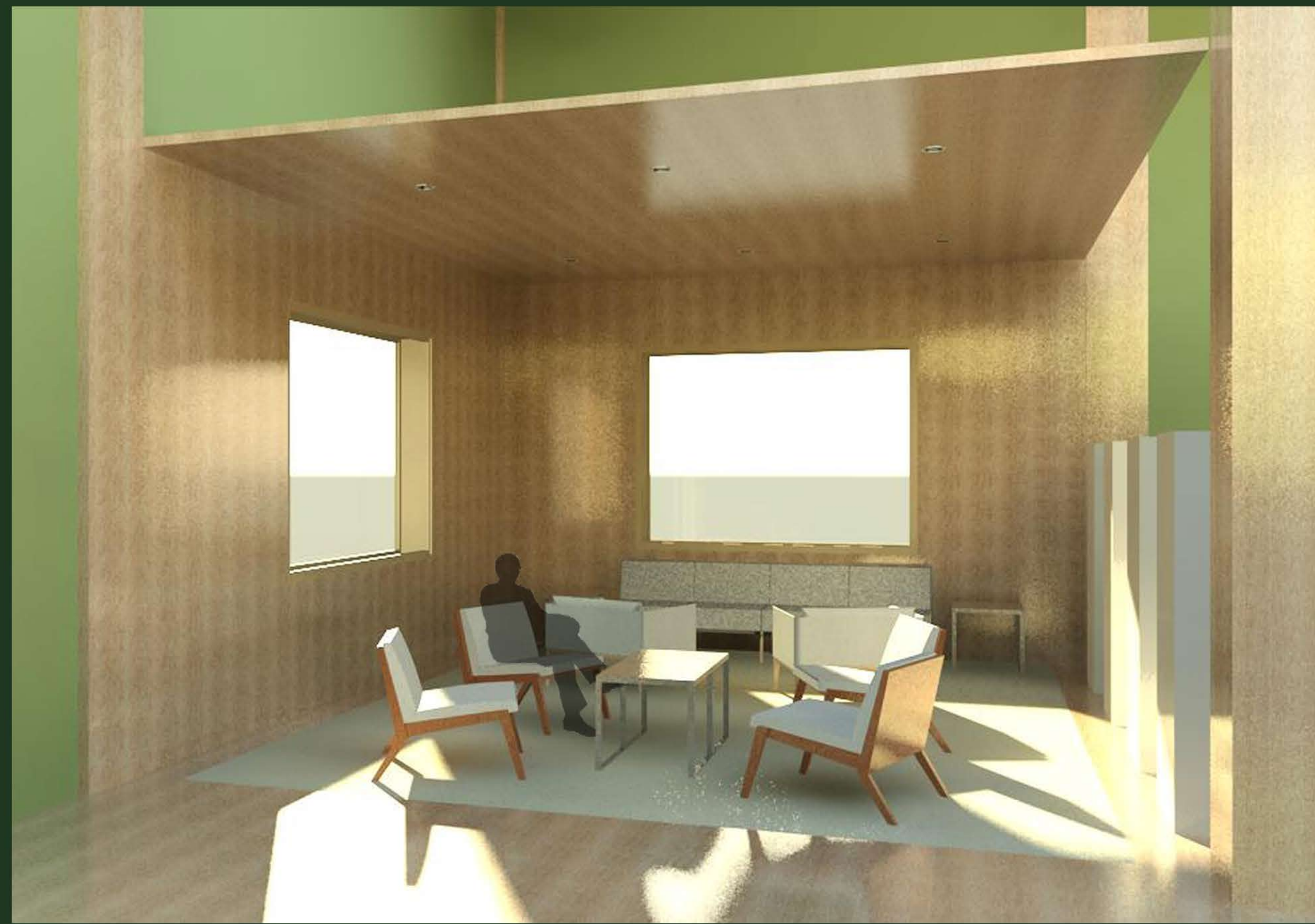


Entrance tunnel displaying current crafts

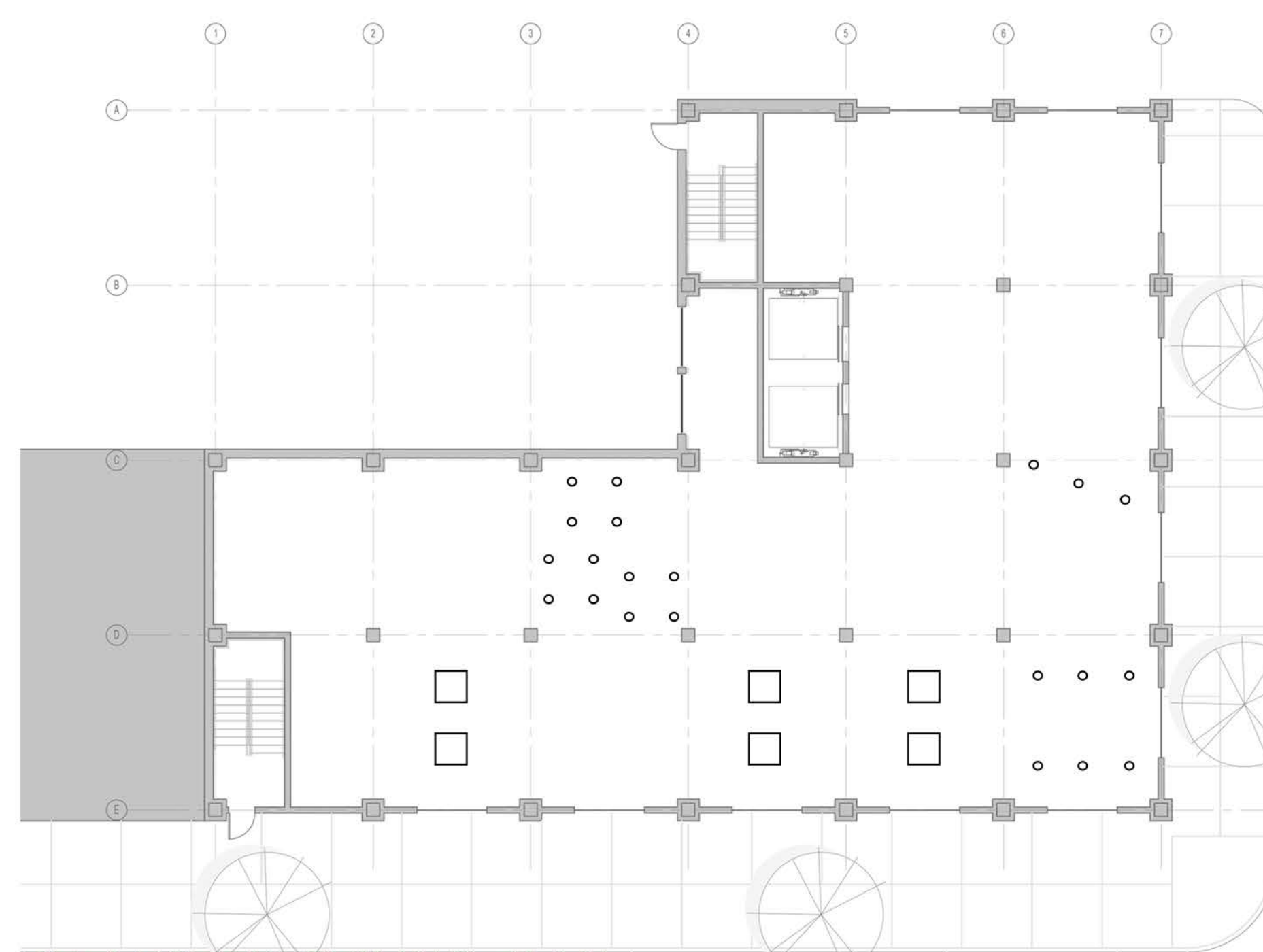




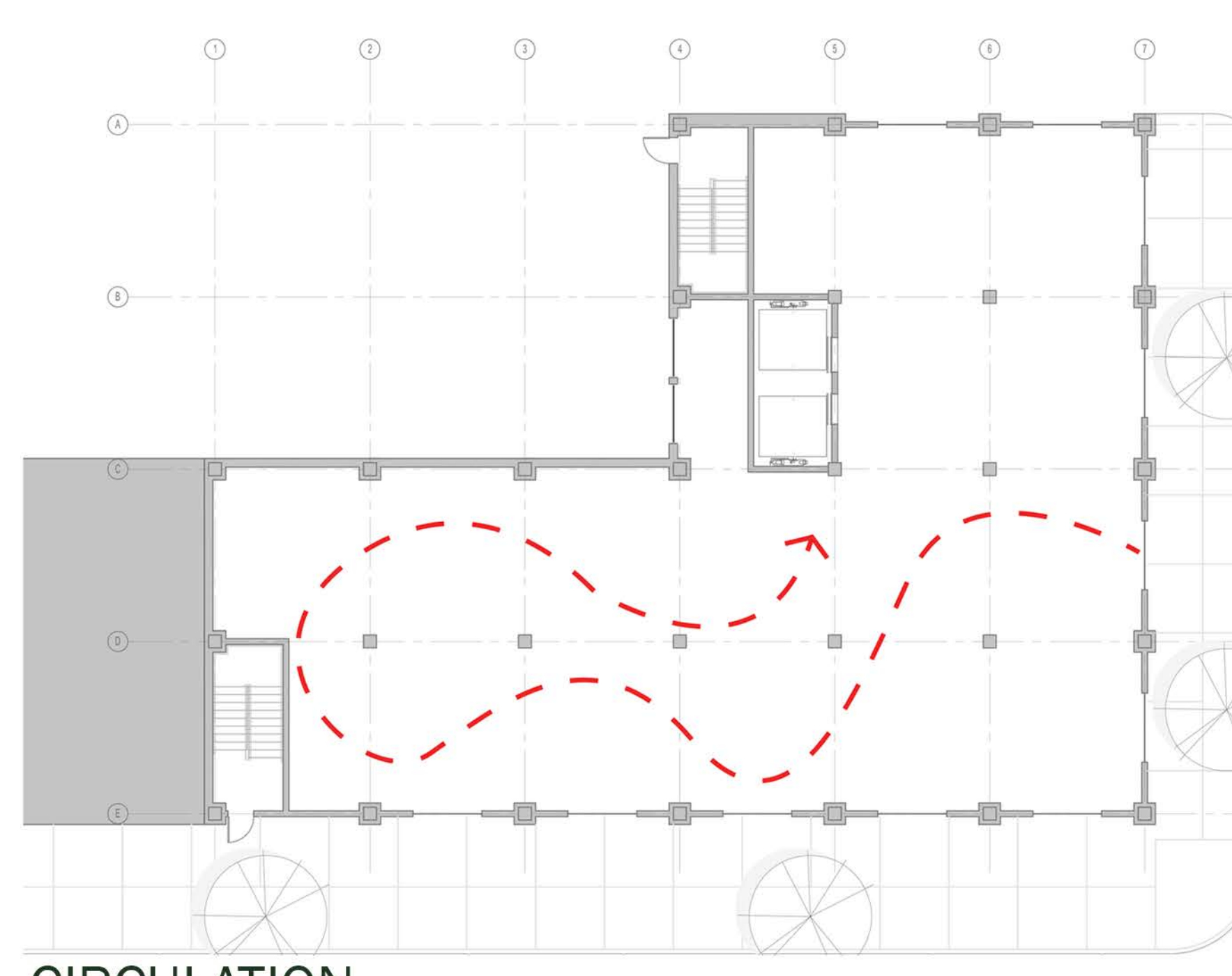
STORAGE COLUMN PLACEMENT



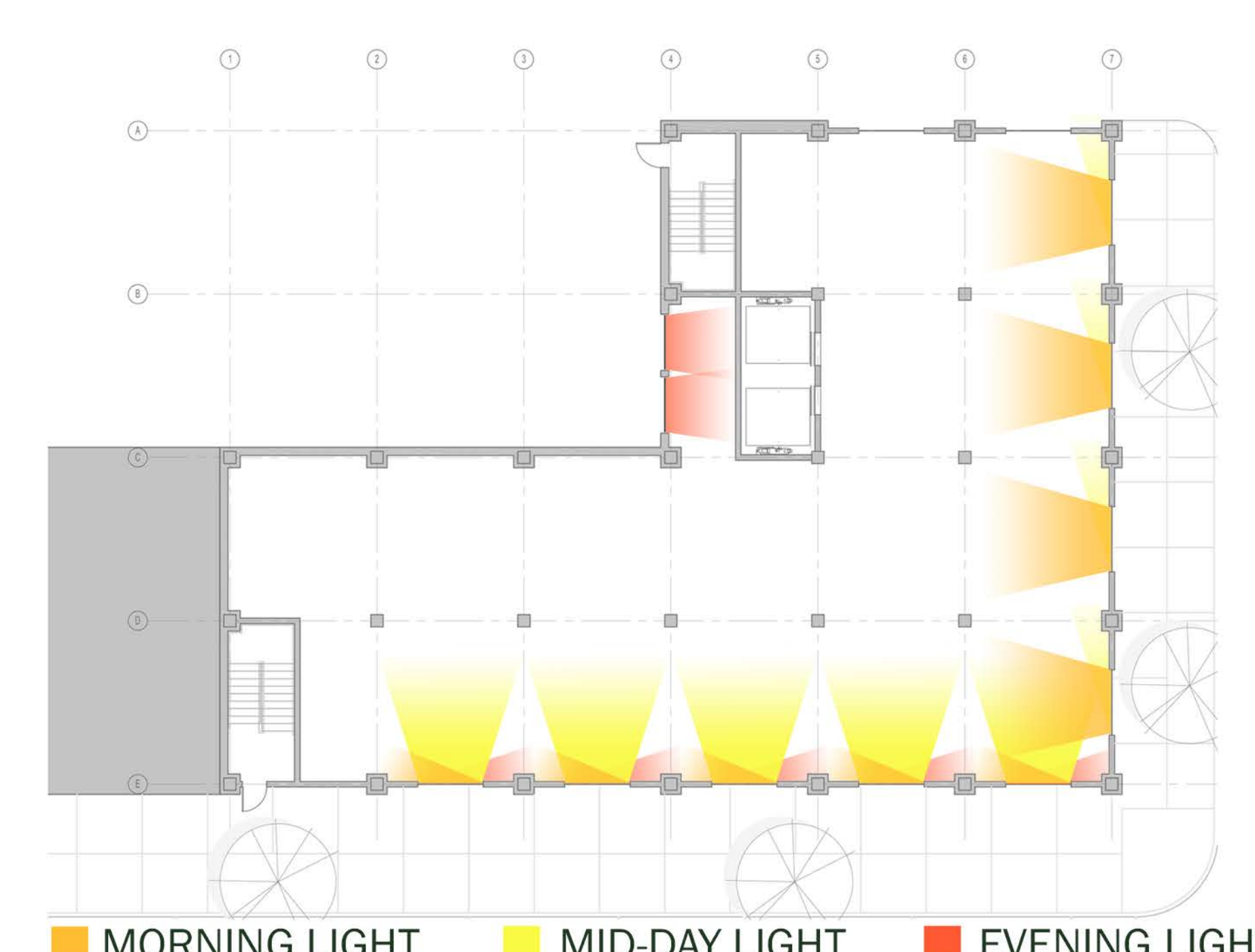
MATERIALS



REFLECTED CEILING PLAN



CIRCULATION



MORNING LIGHT MID-DAY LIGHT EVENING LIGHT