

# concept

Fusing a multitude of individuals in Grand Rapids, MI is the main focus of this community space. The Community Meet zone is the central gathering space for the community. This space will allow for the large Hispanic population to collaborate with the high school and college students through design. The focus of the 'Vertical Studio' in this space will allow for a merging of ideas and creativity from all ages. Kendall College for Art and Design, Central High School, and Southwest Community Campus are the main education establishments that are within a mile radius of Design Fusion. The space will allow for the fusion of ideas and creative thinking to boost the community - whether it be through housing improvement, parks and recreation, or community centers. The Hispanic population can come to the space to vocalize what their ideal community would look like, and the designers can help them envision and create it. The Studio will boast vibrant and graphic fabrics with various colors in the palette that directly reflect upon the liveliness of downtown Grand Rapids. When selecting a site for Design Fusion, research into the city of Grand Rapids was required. The location and history of the Hispanic community was necessary to decide what development the community needed, and where the ideas for this improvement should begin. Sustainable practices are used throughout the space by selecting furniture that is manufactured within the city of Grand Rapids, and uses post-consumer recycled materials. The main palette of finishes used are either post-consumer or pre-consumer recycled materials.

## COMMUNITY MEET



# fusion



## PRIVATE STUDIO



## COLLABORATION SPACE

### Key

- major buildings =
- green space =
- bus stops =

- Kendall College of Art and Design  
Located on the corner of Fountain and Ionia
- Hispanic Population Region  
Located south of downtown on Grandville Ave.
- Central High School  
Located on the corner of Fountain and Prospect
- SITE LOCATION  
Located on the corner of Grandville Ave. and Goodrich



In the heart of downtown Grand Rapids there are two growing subjects. The Hispanic population and the passion for art and design. This Shared Spaces will be located in the middle of these growing regions, to bring unification of art and the Hispanic culture. The art and design scene in downtown Grand Rapids has been rapidly developing. This development is supported with the help of Art Prize and Kendall College of Art and Design, which bring awareness to the multitude of artists working in Grand Rapids. Kendall College of Art and Design is a University in downtown Grand Rapids that encompasses the world of design. Interior design is one of the core majors taught there (Interior Design). The Hispanic population in the downtown area has been growing since the 1920's. Now, 16% of the population in Grand Rapids is Hispanic, and at public schools, 32% of the children are Hispanic. The region in which the Hispanics live is rooted around Grandville Ave, south of downtown GR (Latinos in GR). There are two main lower education schools near the Hispanic community. Southwest Community Campus is a K-8 school, and Central High School educates teenagers in the city of Grand Rapids (School Listings).

School Listings. (2015). In GRPS. Retrieved December 3, 2015.  
Interior Design. (2015). In KCAD. Retrieved December 1, 2015.  
Latinos in GR (n.d.). In Experience Grand Rapids. Retrieved December 1, 2015.  
Images used in Rendering:  
<http://bestofinteriordesigns.com/36730-18-best-mood-boards-interior-design/>  
<http://coreasotropa.ca/tag/concept-board/>  
<http://dec-a-porter.blogspot.com/2012/01/assembling-your-design-scheme-mood.html>  
<https://rosanalinda.wordpress.com/category/design/>  
[http://www.onlinedesignteacher.com/interior\\_design/presentation\\_boards.html#](http://www.onlinedesignteacher.com/interior_design/presentation_boards.html#)

# location analysis



# fusion

Millwork Metal

Bench Upholstery

LVT Flooring

Bench Upholstery

Chair Upholstery

LVT Flooring 2

Task Chair Mesh

Tabletop Laminate

Buoy Upholstery

# finishes

Haworth LTB Bench

Steelcase Tour Desk

Coalesse Lox Chair

Steelcase Buoy

Steelcase Trees

Steelcase Regard

Haworth Patterns Linear Worksurface

Steelcase Cobi

Herman Miller Distil

# furniture

**Studio:** The multitude of students who use this space will have plenty of space to spread out their interior design work in this open floor studio.

Personal student work station, with lay-out space in the center. The arrangement also allows for group work.

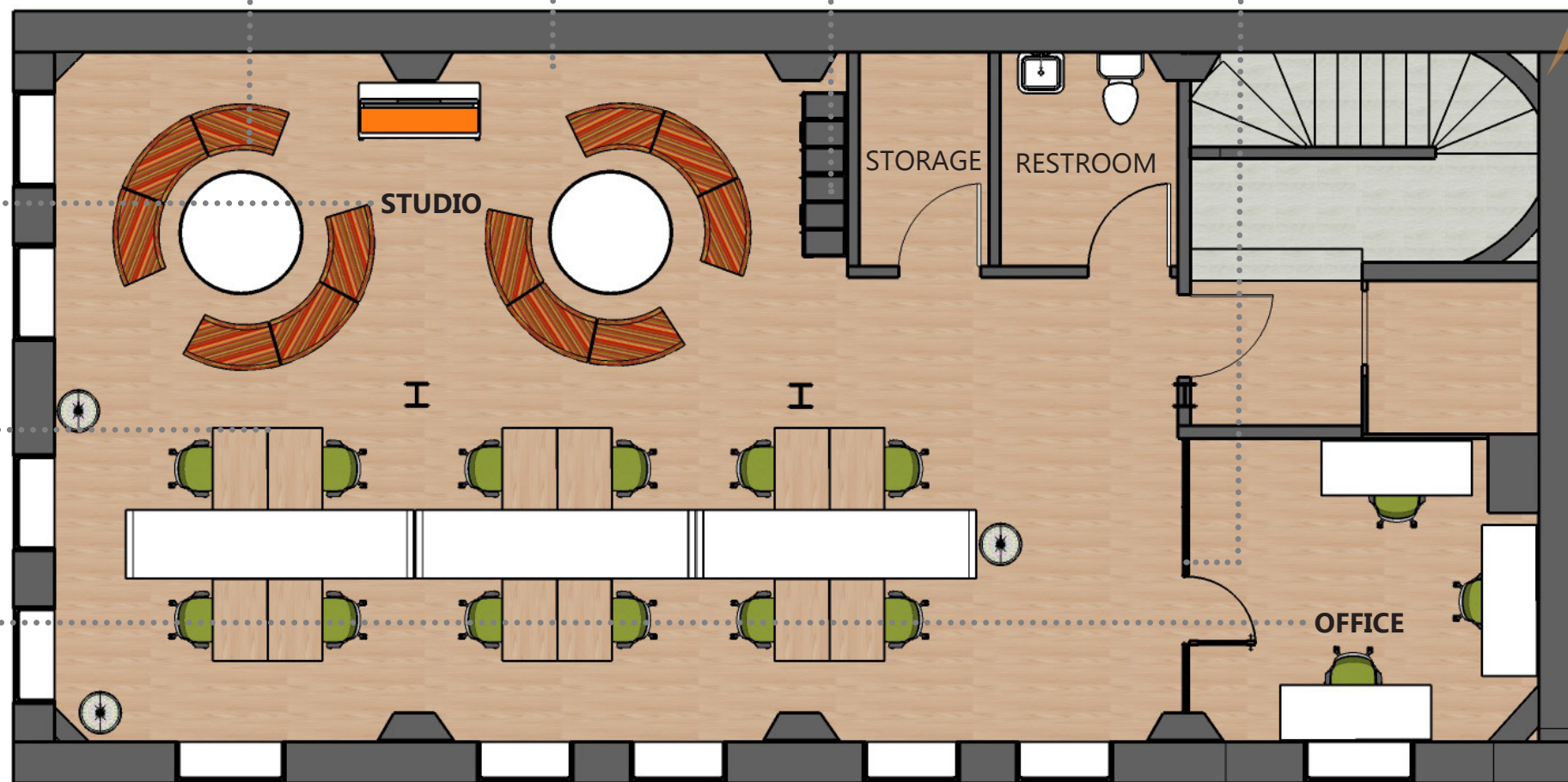
**Office:** Located adjacent to the studio, so faculty are easily accessible to the students.

Collaboration space for students, with large round tables to easily converse at, and bench seating to fit a big group at.

Pin-Up wall so young designers can receive critiques from the faculty.

Lockers provided so they students have a place to store their materials.

Glass wall to keep the open studio feel, but with a built in shade system to give the faculty some privacy.



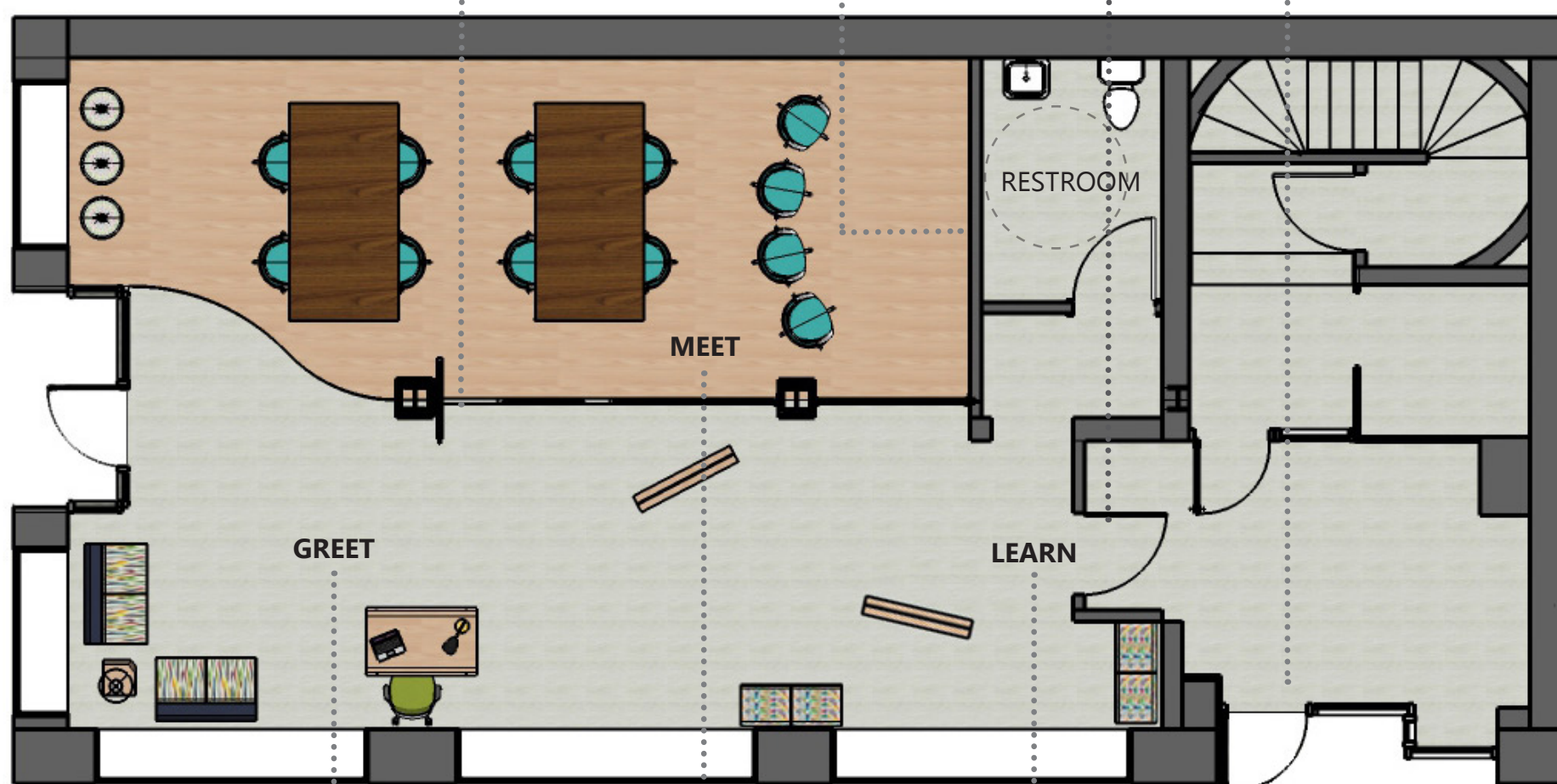
## SECOND FLOOR PLAN: PRIVATE

Glass wall with movable panels to allow complete openness of the space. In case community meet or learn need extra space.

Presentation wall for designers to present their work to the clients helping revitalize the Hispanic region.

Recessed entry to provide an egress path for upstairs occupants.

Private, separate entry provided for the interior design students who can come and go at their leisure.



**Community Greet:** Located right by the entrance, with benches to provide seating, and a reception desk that views the open floor plan.

**Community Meet:** With large collaboration tables, and flexible furniture, this space is perfect for allowing the community to come in and meet with designers.

**Community Learn:** A large open floor and movable pin-up panels make this space functional for showcasing interior design work, and because it is located on a window wall, the public can see in too.

## FIRST FLOOR PLAN: PUBLIC